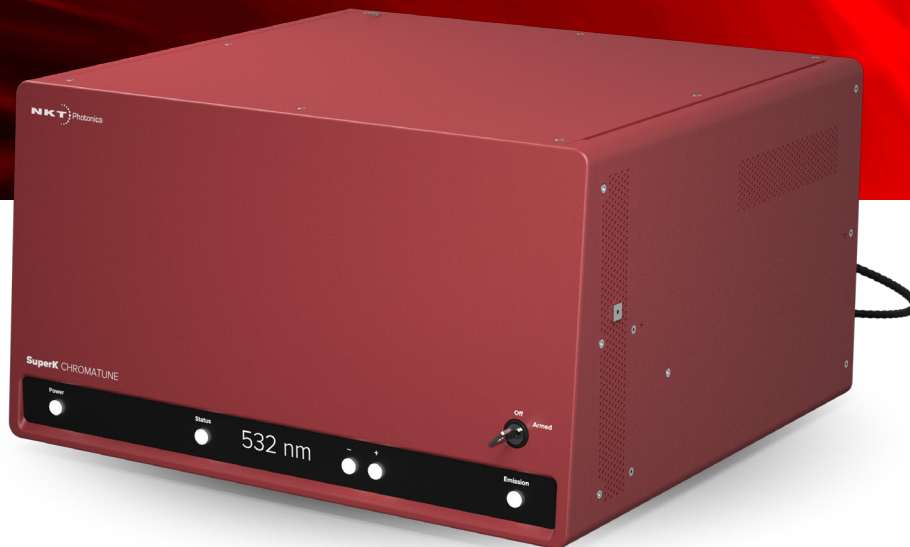


SUPERK CHROMATUNE

The World's broadest tunable laser



WORKS BY THE FLIP OF A SWITCH

Finally, a laser that is easy to use and lets you focus on your work.

Maybe saying that you will never need another laser is taking it too far, but... because of its broad 400–1000 nm tuning range, SuperK CHROMATUNE covers numerous of your wavelength needs. No alignment, no adjustments.

How to get started? Pick your wavelength and press the button to get instant light. It is that easy. Ready. Steady. Go.

Applications

- Microscopy
- Spectroscopy
- Fluorescence
- Lifetime Imaging
- Optical characterization
- Plasmonics & metamaterials

PRELIMINARY SPECIFICATIONS

Optical

Spectral coverage [nm]	400 - 1000
Full spectral scan speed [s]	1
Constant output power per line [mW]	> 1
Power stability [%]	± 5
Repetition rate. Fixed / Variable [MHz]	78 / 0.15 - 78
Minimum bandwidth ¹⁾ / Maximum bandwidth [nm]	5-10 / 50
Out-of-band suppression ²⁾ [dB]	> 40
Wavelength resolution [nm]	1.5
Wavelength step size [nm]	0.1
Beam output	Collimated armored fiber
Beam quality	M ² < 1.1
Beam diameter [mm]	≈ 0.5 @ 400 nm ≈ 0.6 @ 600 nm ≈ 0.8 @ 800 nm ≈ 0.9 @ 1000 nm
Beam divergence [mrad]	< 1.5

1) Bandwidth increases with the wavelength.

2) Measured within +/-20 nm from the center wavelength.

Mechanical/Electrical

System cooling	Air
Operation temperature [°C]	18 - 30
Storage temperature [°C]	-10 - 55
Dimensions (WxHxL) [mm]	440 x 251 x 400
Weight [kg]	26 (without pulse picker) 27.5 (with pulse picker)
Computer interface	USB 2.0/RS-232/Ethernet
Operation voltage	100-240 VAC 50/60 Hz
Power consumption [W]	< 175
Door interlock connector	2-pin LEMO
Sync (trigger) output	NIM, analog pulse out, digital gate out (only for variable rep rate)

All NKT Photonics products are produced under our quality management system certified in accordance with the ISO 9001:2015 standard.

