



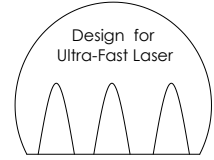
High Power Free Space Isolator Sensitive (Ultra-Fast Fiber Lasers)

Features

Low Insertion Loss, High Isolation
 High Power Handling, Large Clear Aperture
 Broad band

Applications

Ultra-Fast Fiber Lasers, Solid Laser
 Fiber Amplifier, Space Laser Protection
 Fiber optic isolator, Lab Research
 Optical Fiber Amplifier



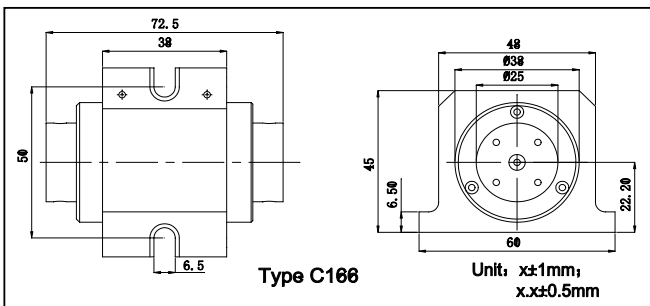
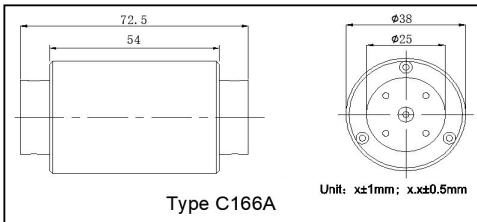
Specifications

Parameters	Unit	Values	
Center Wavelength (λ_c)	nm	1064 or Specify	
Operating Wavelength Range	nm	± 10	± 40
Typ. Peak Isolation at 23°C	dB	30	25
Min. Isolation at 23°C	dB	97%	93%
Max. Insertion Loss at 23°C	dB	94%	90%
Min. Extinction Ratio	dB	25	
Max. Optical Average Power	W	50 ,100 or Specify	
Max. Peak Power for ps Pulse	kW	1000 or Specify	
Damage Threshold at 10ns	J/cm ²	10	
Operating Temperature	°C	+10 to +50	
Storage Temperature (Non-Condensing)	°C	0 to +75	

*Input polarization plane - vertical

*The material must be RoHS compliant.

Package Dimensions



Ordering Information

HPFSI-UF-①①-②②-③③-④④-⑤⑤-⑥⑥

①①: Wavelength
 06 - 1064nm
 SS - Specify

③③: Handling Power
 50 - 50W
 100 - 100W
 SS - Specify

⑤⑤: Polarization type
 S - Polarization Sensitive

②②: Package Type
 C166 - Type C166
 C166A - Type C166A

④④: Clear Aperture
 50 - Dia. 5.0mm

⑥⑥: Wavelength Range
 10 - $\lambda \pm 10$ nm
 40 - $\lambda \pm 40$ nm