

Specification Review Date Sheet

Spec Review No.:
 Customer:
 Description: (2+1)X1 MultiMode Pump & Signal Combiner

Date:
 Customer P/N:
 Optizone P/N:

Specifications

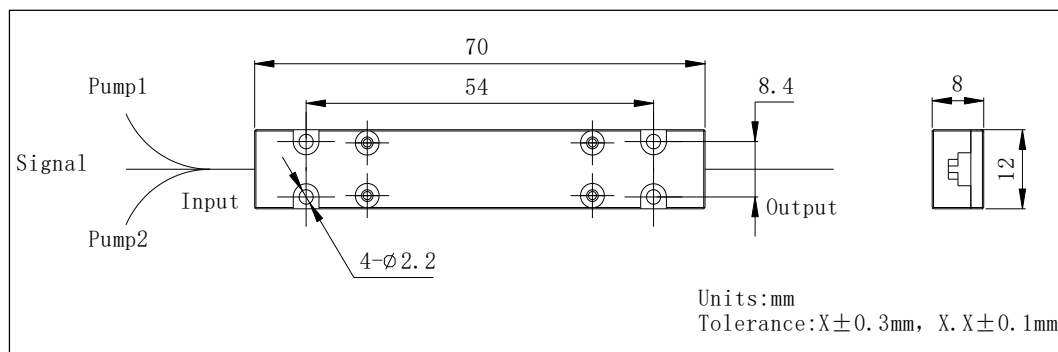
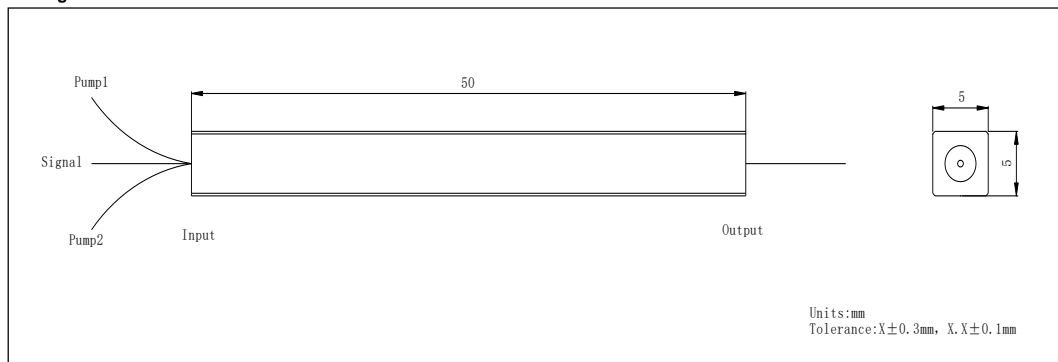
Parameters	Unit	Values	
Product Type	-	(2+1)X1	
Pump Wavelength	nm	793, 915, 916, 940, 976... (790-1000)	
Signal Wavelength	nm	1030, 1064, 1080, 1550, 1940, 2000...	
Pump Fiber	-	MM-S105/125 0.15NA, 0.22NA	
Signal Fiber	-	Hi 1060, 5/130DC, 10/125DC, 30/250DC	
Output Fiber	-	20/125 DC, 5/130DC, 10/125DC, 30/250DC	
Min.Pump Efficiency	%	90 - 95	
Max.Signal Insertion Loss (Input to Output)	dB	0.5	
Max.Pump Power Handling (Each Port)	W	5 - 10	20 - 100
Package	mm	50(L) x5(W) x5(H)	70(L) x12(W) x8(H)
Operating Temperature	°C	-5 to 75	
Storage Temperature	°C	-40 to 85	

*Above specifications are for device without connector.

*Port mark with digital labeling

*The material must be RoHS compliant.

Package Dimensions



Ordering Information

MMPC-LC-(2+1)X1-①-②②②-③③③③-④④④-⑤⑤-⑥⑥-⑦-⑧

①:Pump Propagation Direction
 F- Forward
 B- Backward
 S - Specify

②②②:Pump Wavelength
 793- 793nm
 915- 915nm
 976- 976nm
 ...
 SSS - Specify

③③③③:Signal Wavelength
 1030- 1030nm
 1550- 1550nm
 1064- 1064nm
 2000- 2000nm
 ...
 SS - Specify

④④:Pump Fiber Type
 02- MM-S105/125-22A
 01- MM-S105/125-15A
 ...
 SS - Specify

⑤⑤:Signal Fiber Type
 36- 5/130 DC
 37- 10/125DC
 03- 30/250DC
 ...
 SS - Specify

⑥⑥:Output Fiber Type
 36- 5/130 DC
 37- 10/125DC
 03- 30/250DC
 ...
 SS - Specify

⑦:Fiber Length
 1- 1m
 2-2m
 ...
 S - Specify

⑧:Package Type
 P1- 50X5X5
 P2- 70X12X8
 ...
 S - Specify