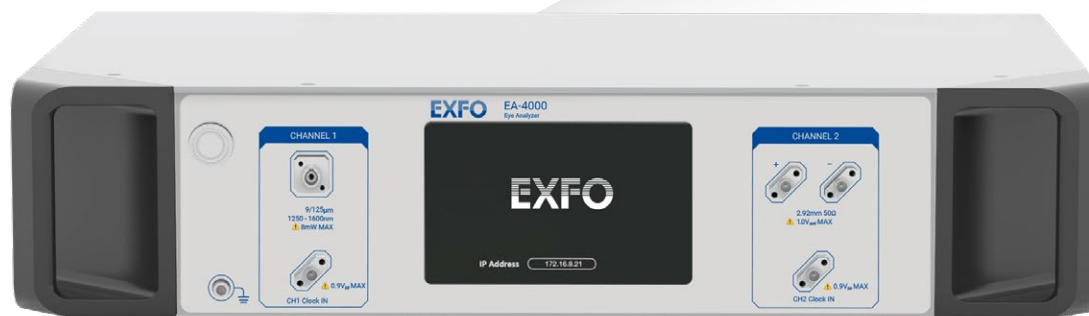


EA-4000 Eye Analyzer

OPTICAL AND ELECTRICAL SAMPLING SCOPE



The fastest sampling scope in the industry supporting 28G NRZ signals.

KEY FEATURES

Ultra-fast 1M sample/s, measures 1000 waveforms in 2 seconds (2000 sample/waveform)

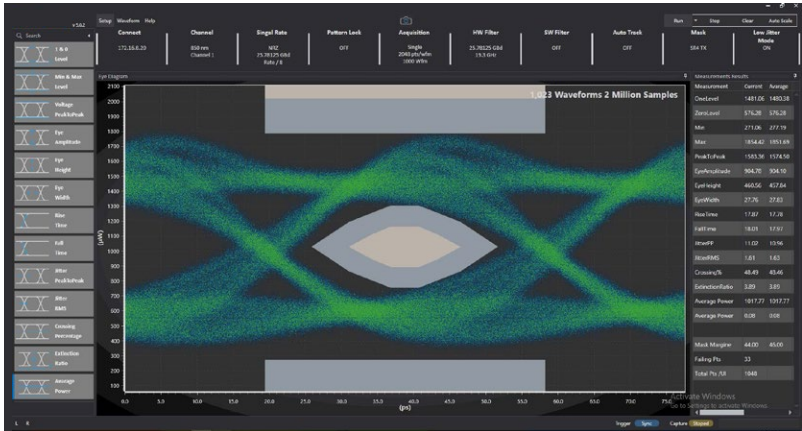
Supporting 28G NRZ signals

Optical receiver support singlemode and multimode

Repeatable measurements and comparable to tier-1 scope

Built-in low jitter mode

COMPELLING EYE SHARPENING FOR PRODUCTION TESTING



Intuitive GUI for NRZ eye diagrams

SPECIFICATIONS

All specifications are typical at 23 °C ± 2 °C unless otherwise specified.

TECHNICAL SPECIFICATIONS

Electrical

Sampling speed (sample/s)	1,000,000
Bandwidth (GHz)	33 (typical at 3 dB bandwidth)
Input range (V_{ppd})	1.0 (max.)
Damage amplitude (V_{ppd})	1.7 (max.)
Connector type	K(f) (50 Ω)
Return loss (dB)	-6.5 (at 32 GHz)
RMS noise (mV)	2.0 (typical) / 2.5 (max.)

Optical

Unfiltered bandwidth (GHz)	33 (for 28G optical)
Wavelength (nm)	830-1600 (full range model of 28G) 1250-1600 (SMF model of 28G)
Return loss (dB)	-24 (full range model) -30 (SMF model)
Mask sensitivity (dBm) (CWDM4 mask, mask margin 0%, hit count 0)	-8 (typical at 850 nm) -10 (typical at 1310 nm)
Damage power (mW)	8
Connector type	FC/PC (50/125 μ m) (full range model) FC/PC (9/125 μ m) (SMF model)

Clock

Clock input ratio	/8, /16, /32, /64
Trigger jitter (fs)	<290 (typical)
Sensitivity (mV)	100 (typical)

GENERAL SPECIFICATIONS

Size (H x W x D)	103 mm x 442 mm x 300 mm (4.1 in x 17.4 in x 11.8 in)
Weight	≤10 kg (22 lb)
Temperature	Operating Storage
	5 °C to 40 °C (41 °F to 104 °F) -20 °C to 70 °C (-4 °F to 158 °F)
Relative humidity	20% to 80%
Power ^a	100/120 Vac (50/60/400 Hz) 220/240 Vac (50/60 Hz) 60 W typical/80 W max.
Access interface	Gigabit Ethernet (RJ45 port)

a. Operate with supply voltage fluctuations up to ±10 % of the nominal voltage.

MODELS

EA-4000	No. of optical CH	λ_{start}	λ_{stop}	Connector type	No. of differential electrical CH	x10G option	Application
28-1-0-F	1	830 nm	1600 nm	FC/PC (50/125 μ m)	0	YES	Full range: singlemode and multimode
28-2-0-F	2	830 nm	1600 nm	FC/PC (50/125 μ m)	0	NO	Full range: singlemode and multimode
28-1-1-F	1	830 nm	1600 nm	FC/PC (50/125 μ m)	1	NO	Full range: singlemode and multimode
28-1-0-SM	1	1250 nm	1600 nm	FC/PC (9/125 μ m)	0	YES	Singlemode
28-2-0-SM	2	1250 nm	1600 nm	FC/PC (9/125 μ m)	0	NO	Singlemode
28-1-1-SM	1	1250 nm	1600 nm	FC/PC (9/125 μ m)	1	NO	Singlemode
33-0-1-E	0	-	-	-	1	NO	Electrical EYE
33-0-2-E	0	-	-	-	2	NO	Electrical EYE

ORDERING INFORMATION

EA-4000-XX-XX

Model

28-1-0-F^a = 28G optical scope (830 nm - 1600 nm)
 28-2-0-F^a = 2CH 28G optical scope (830 nm - 1600 nm)
 28-1-1-F^a = 28G O/E scope, 1CH optical (830 nm - 1600 nm) and 1CH electrical (differential)
 28-1-0-SM^b = 28G optical scope (SMF) (1250 nm - 1600 nm)
 28-2-0-SM^b = 2x28G optical scope (SMF) (1250 nm - 1600 nm)
 28-1-1-SM^b = 28G O/E scope, 1CH optical (SMF) (1250 nm - 1600 nm) and 1CH electrical (differential)
 33-0-1-E^c = 33 GHz digital electrical scope (differential)
 33-0-2-E^c = 2CH 33 GHz digital electrical scope with K connector (differential)

Options

10 = Add 10G optical hardware^d

- a. Multimode and singlemode supported.
 b. Best for singlemode.
 c. Best for electrical EYE.
 d. Available for EA-4000-28-1-0-F and EA-4000-28-1-0-SM.

EXFO headquarters T +1 418 683-0211 Toll-free +1 800 663-3936 (USA and Canada)

EXFO serves over 2000 customers in more than 100 countries. To find your local office contact details, please go to www.EXFO.com/contact.

EXFO is certified ISO 9001 and attests to the quality of these products. EXFO has made every effort to ensure that the information contained in this specification sheet is accurate. However, we accept no responsibility for any errors or omissions, and we reserve the right to modify design, characteristics and products at any time without obligation. Units of measurement in this document conform to SI standards and practices. In addition, all of EXFO's manufactured products are compliant with the European Union's WEEE directive. For more information, please visit www.EXFO.com/recycle. Contact EXFO for prices and availability or to obtain the phone number of your local EXFO distributor.

For the most recent version of this spec sheet, please go to www.EXFO.com/specs.

In case of discrepancy, the web version takes precedence over any printed literature.