



**Optizone Technology Limited**

[www.optizonetech.com](http://www.optizonetech.com)

Specializing in developing & manufacturing of premium optical passive components

# Company Profile



**We have good business relationship & provide adequate service support to reputable corporate customers & suppliers from U.S., Europe & Asia.**



- **Optizone Technology is a professional manufacturer & supplier in leading optical components, laser components & modules.**
- **We provide both innovative & leading edge standard/customized components/modules as well as contract manufacturing solutions to our customers.**
- **Our components are supplied & widely used in Industrial Fiber Laser Industry, Telecommunication, Sensing, Medical, Defense, Scientific Research, etc.**
- **Currently Optizone is the market leader in high power components for Industrial Fiber Laser Industry. We are also a leading supplier in PM components for various industries.**
- **We have a dedicated & comprehensive team with vast knowledge & experience in component design, engineering & manufacturing capabilities.**
- **In particular, Optizone has a strong R&D team with respective engineers in many fields, including optical, electronics, mechanical, material science, etc.**

# Company Background

- **Our headquarter is located in Hong Kong.**
- **Our Operation is based in our Shenzhen factory which has an area of 4000 sq m (43000 sq ft), including its production floor which covers an area of over 2000 sq m (21500 sq ft).**



# Company Operating System



# Organization Structure

---

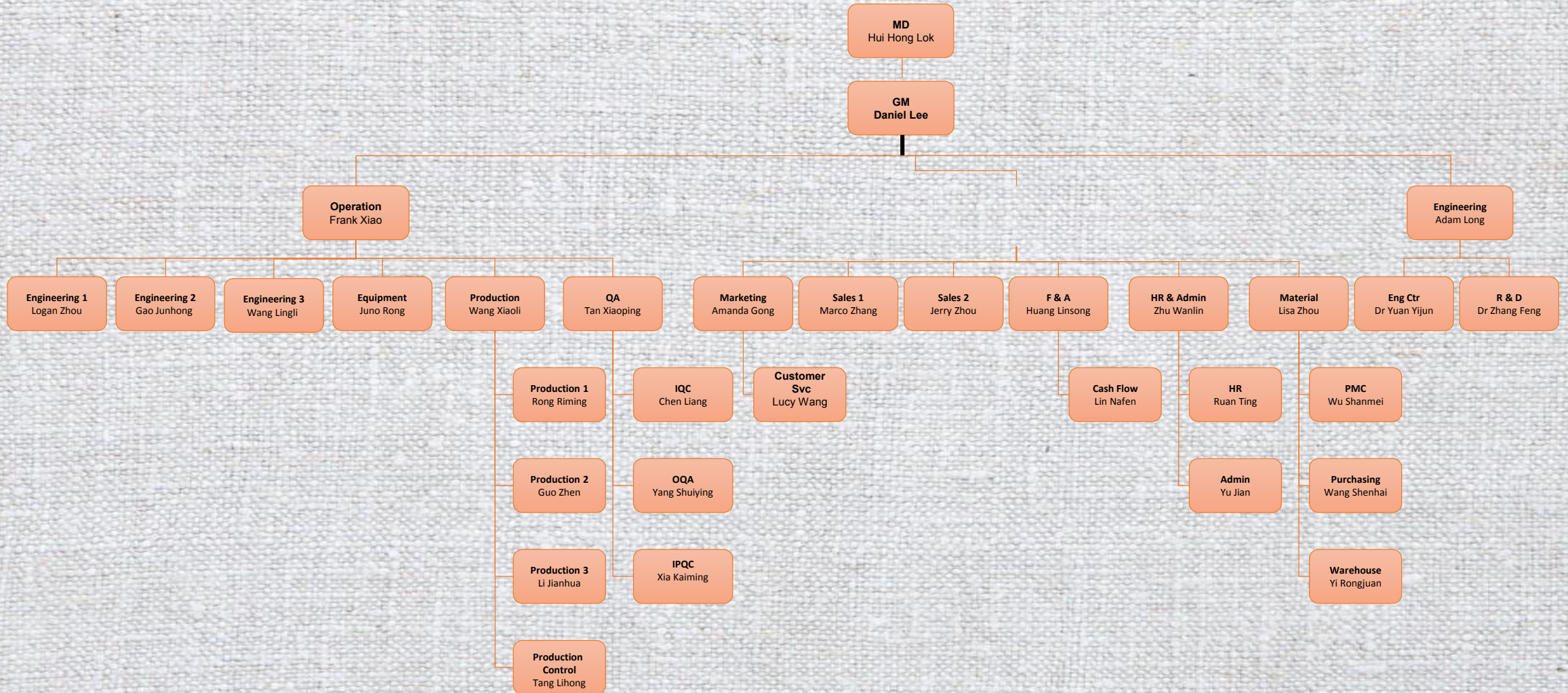
**Optizone Holdings Limited**  
(a BVI Registered Company)

**Optizone Technology Limited**  
(100% Wholly Owned by Optizone Holdings Limited, a Hong Kong Registered Company)

**Optizone Technology (Shenzhen) Limited**  
(100% Wholly Owned by Optizone Technology Limited, a Shenzhen Registered Company)



# Organization Chart



# Human Resources

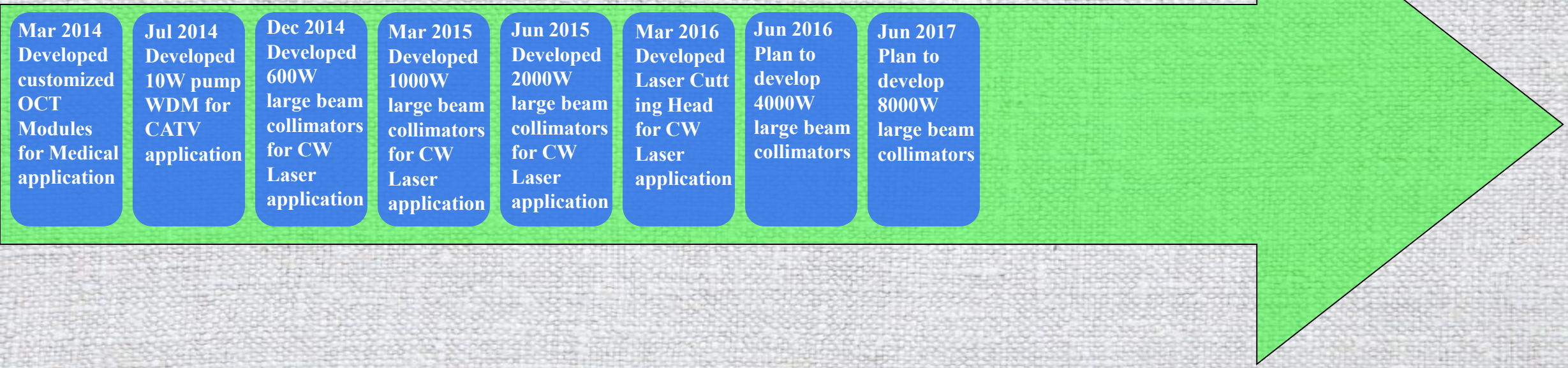
<b>Department</b>	<b>Worker</b>	<b>Staff</b>	<b>Total</b>	<b>%</b>
GMO	0	6	6	0.18%
MKT	0	9	9	2.81%
ENG	0	25	25	7.81%
R & D	0	5	5	1.56%
MATL	3	9	12	3.75%
QA	14	11	25	7.81%
PROD	200	10	210	65.63%
HR & ADMIN	13	9	22	6.88%
F & A	0	6	6	1.88%
<b>Total</b>	<b>230</b>	<b>90</b>	<b>320</b>	<b>100%</b>

# Company Development Milestones





# Company Development Milestones



## PART 2

# Company Honor

公司荣誉

# Company Patents



- National High-Tech Enterprise since 2013
- Over 20 patents in optical passive component technology



# Quality System

## Our Quality Standard

- Provide products of premium quality & performance
- Strictly adhere to international industrial standards
- Provide individual test data sheet for each product
- Ability in tracing RMA product from each individual work station
- Ensure that all our products are supplied with a commitment to quality & consistency performance

## Quality Policy

- Base on people-oriented, premium quality and innovative research & development, Optizone strive to succeed

## ISO9001:2008 Quality Management System

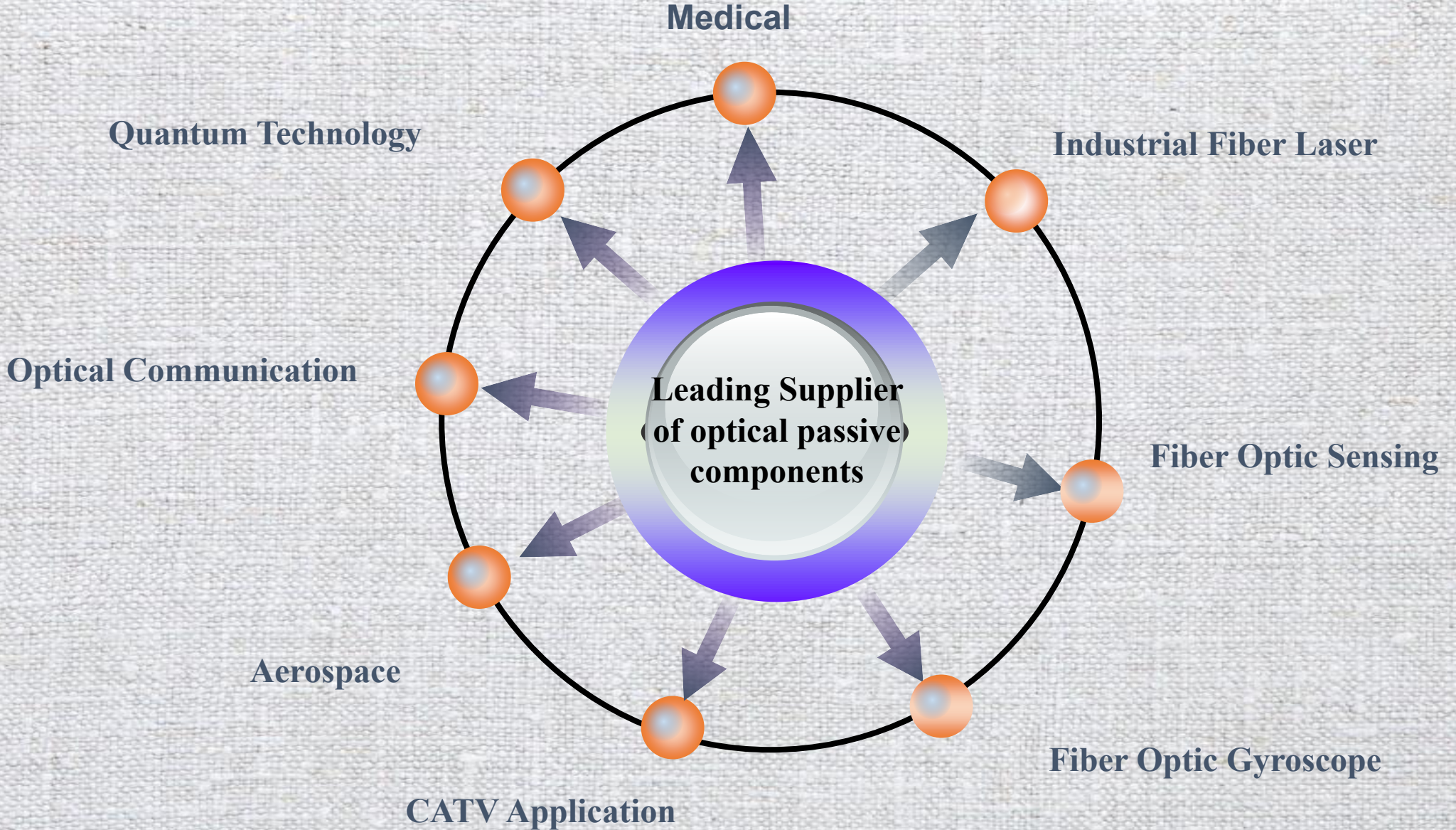


## PART 3

Product Application

产品应用

# Company Goal



## Fiber Optic Cables - Both Single & Dual Head

Wavelength Coverage: 1030/1064/1080nm

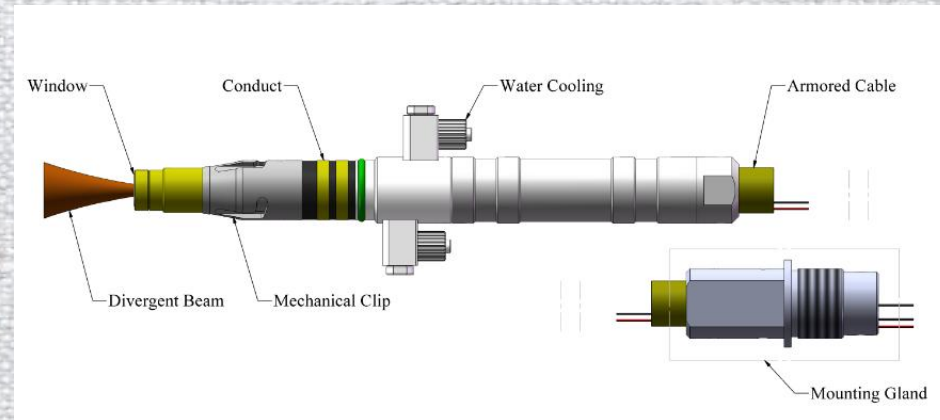
Fiber Type: 400/660/800/1100um cladding LMA Fiber

Power: 1 - 8KW

**Application: For Microprocessing in Industrial Cutting, Welding, Drilling, etc.**

### Product Features:

- ★ Compatible with QB series
- ★ Water-Cooled Mechanism
- ★ Certified Dust Proof IP6X



## Large Beam Collimators

**Wavelength Coverage: 1030/1064/1080/1550/2050nm**

**Fiber Type: Single Mode or LMA fiber**

**Power: 100 - 1000W CW Power**

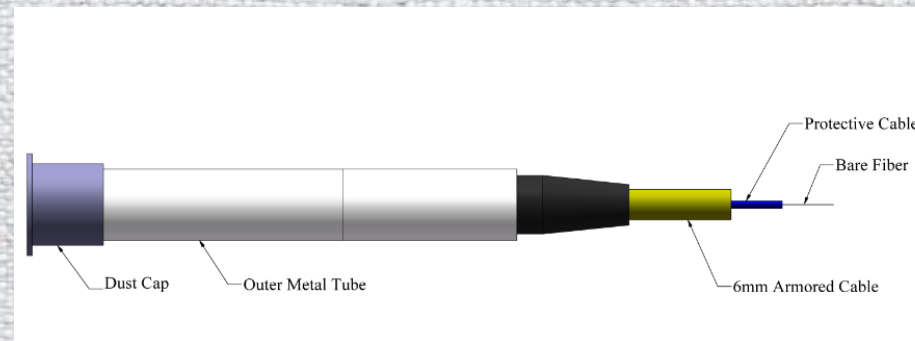
**Beam Diameter: 0.5/5/8/10/15mm**

**Application: For Microprocessing in Industrial Cutting, Welding, Drilling, etc.**

**Product Features:**

★ **Adjustable Beam Diameter**

★ **Air-Cooled Mechanism**





## High Power Isolators

**Wavelength Coverage: 1030/1064/1080/1550/2000nm**

**Fiber Type: Single Mode (PM) or LMA (PM) Fiber**

**Power: 10 - 300W**

**Beam Diameter: 0.5/5/8/10/15mm**

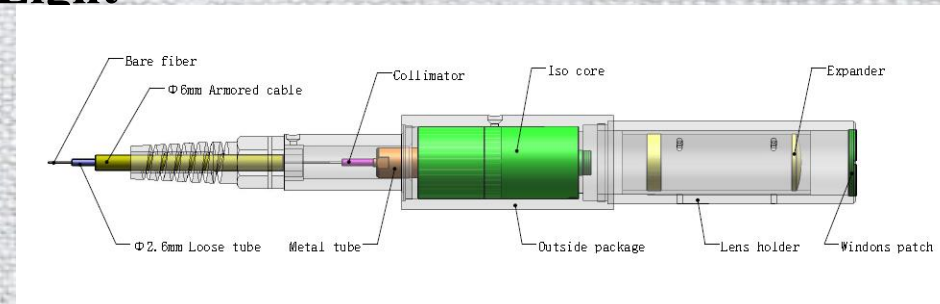
**Application: For Microprocessing in Industrial Marking, Scribing, Surface Finishing, etc.**

### Product Features:

★ Customization with Filter / PD Detection / Red Light

★ Dual Stage Isolation

★ Air & Water-Cooled Mechanism



## Optical Passive Components

**Wavelength Coverage: 630/780/850/980/1030/1060/1080/1550/1650/2050nm**

**Products Include: Isolator, Circulator, WDM, Coupler, PBC/S, Faraday Mirror, Module Integration, RBG, etc.**

**Power: 300mW - 30W**

**Custom Made: Transmission/Receiving Module, OCT Module, etc.**

**Application: Widely use in Fiber Sensing, Telecommunication, Aerospace, Scientific Research, Medical Equipment, Environment Detection System, EDFA etc.**

**Product Features:**

- ★ Low Insertion Loss
- ★ Low Cost
- ★ High Stability



## Polarization Maintaining Components

**Wavelength Coverage: 630/780/850/980/1030/1060/1080/1550/1650/2050nm**

**Products Include: Isolator, Circulator, WDM, Coupler, Splitter, Faraday Mirror, Module Integration, etc.**

**Custom Made: Transmission/Receiving Module, OCT Module, etc.**

**Applications: Widely use in Fiber Sensing, Telecommunication, Aerospace, Scientific Research, Medical Equipment, Environment Detection System, EDFA etc.**

### Product Features:

- ★ High Extinction Ratio 30dB, Low Insertion Loss
- ★ Excellent Stability & Environment Reliability
- ★ High Customization Flexibility
- ★ Specially Recommended 2um products



## **Essential Customers**

---

**Applied in industrial cutting, welding, drilling, etc. processing fields**

**Wuhan Raycus**

**Shenzhen JPT**

**Shenzhen Super Laser**

**Shandong Hfb**

**EO Technics (Korea)**

**Shanghai Feibo**

**Applied in industrial marking, scribing, surface finishing, etc. processing fields**

**Wuhan Raycus**

**Shenzhen JPT**

**Shenzhen Suoer Laser**

**Shandong Hfb**

**EO Technics (Korea)**

**Shenzhen Hans Laser**

**Nufern (U.S.)**

**V-Gen (Israel)**

**Furukawa (Japan)**

**Keopsys (France)**

**Coherent (U.S.)**

## Applied in Optical Fiber Sensing, Telecommunication Industries

**Wuhan Accelink**

**Shenzhen O-Net**

**Fuzhou Photop**

**Mitsubishi (Japan) Mitsubishi (Japan)**

## Applied in Medical Equipment Systems

**SIOM (China)**



# Optical Zone

以人为本，以质为先，精研创新，光越万里

## Limits Beyond Infinity



Website: [www.optizonetech.com](http://www.optizonetech.com)



Phone number: 86 755 2799 5900